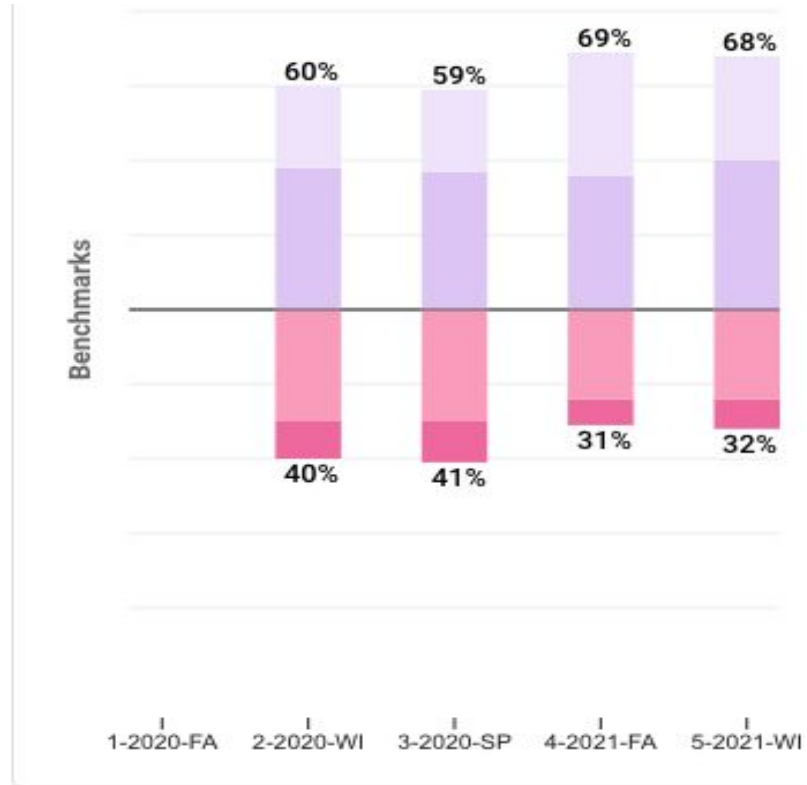

Garfield Winter 2021-22 Data

— as indicated by the FAST
assessment —

District aMath Longitudinal Data (grades 2-6)

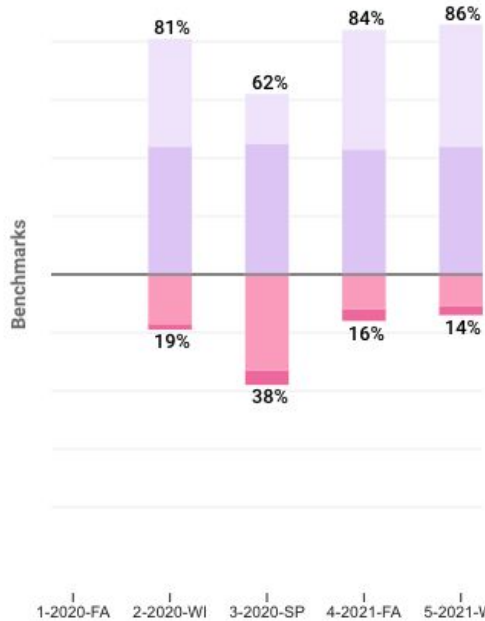


The aMath assessment was implemented in winter of the 2020-21 school year.

Grade Level Breakdown: 2nd-4th

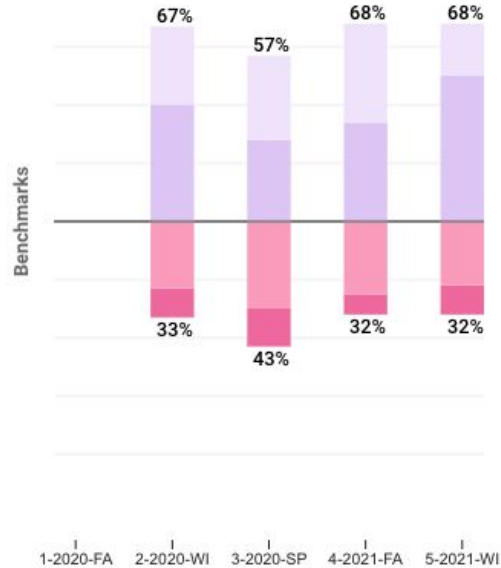
TWO

No data to compare



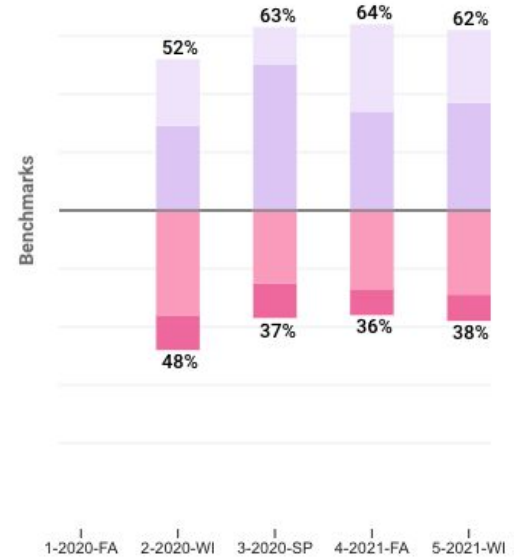
THREE

No data to compare

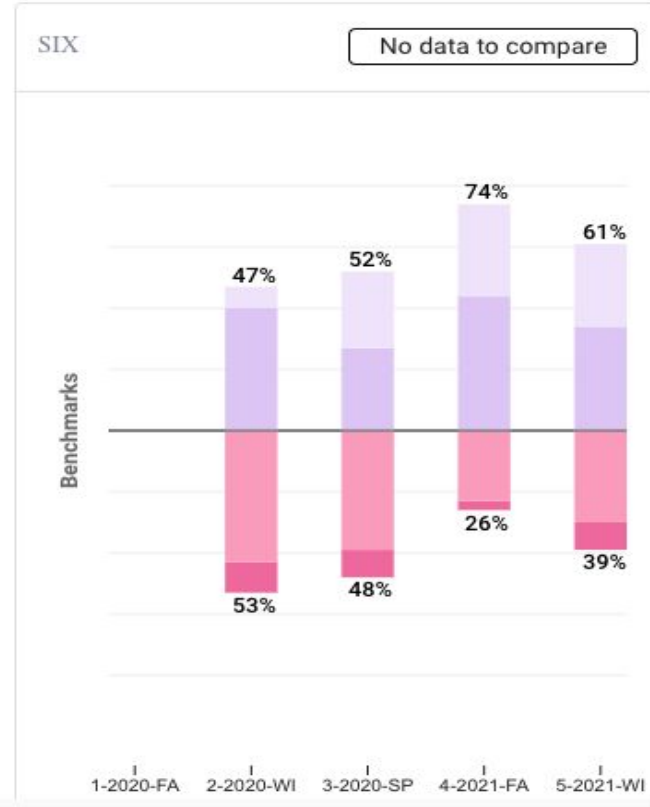
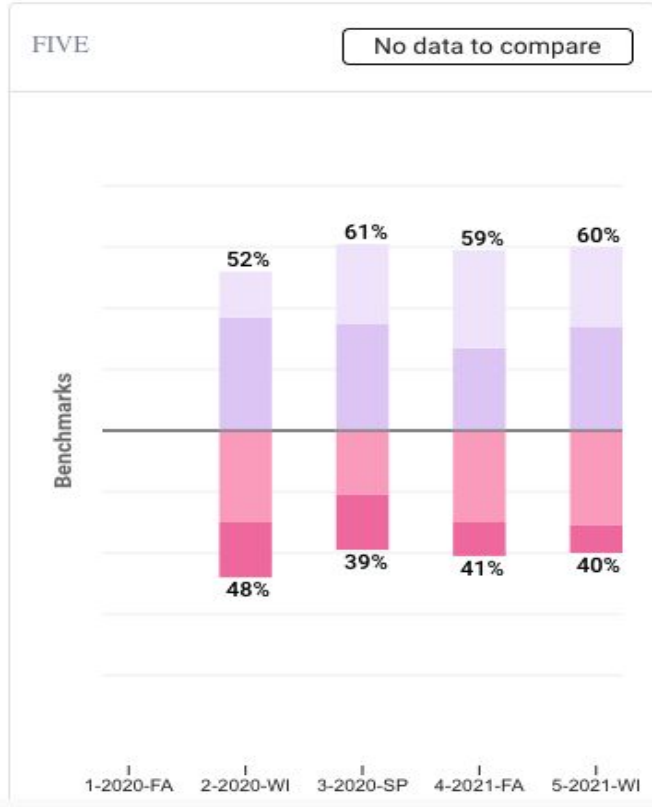


FOUR

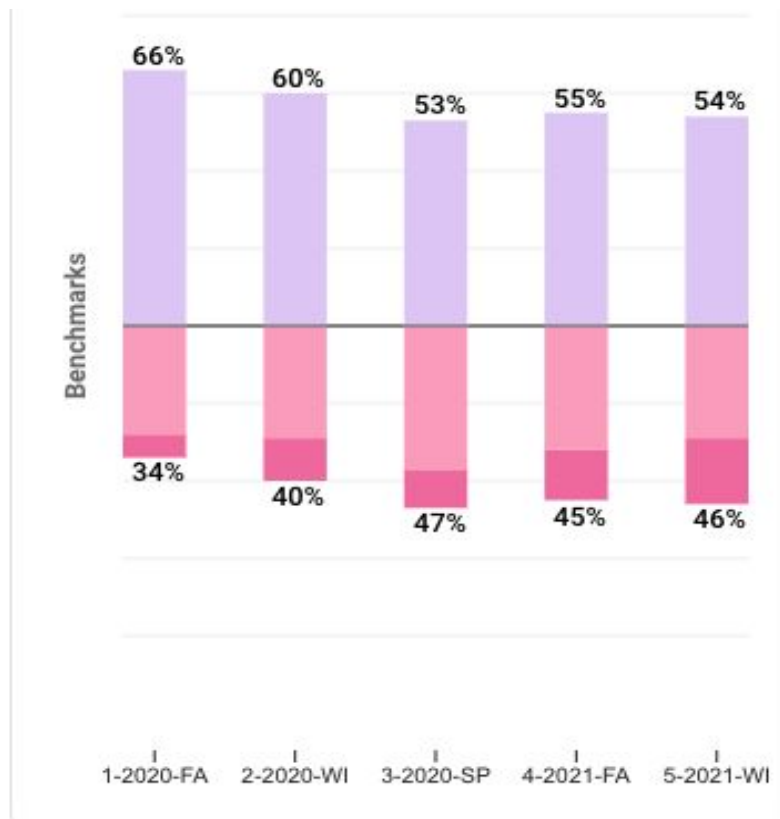
No data to compare



Grade Level Breakdown: 5th-6th

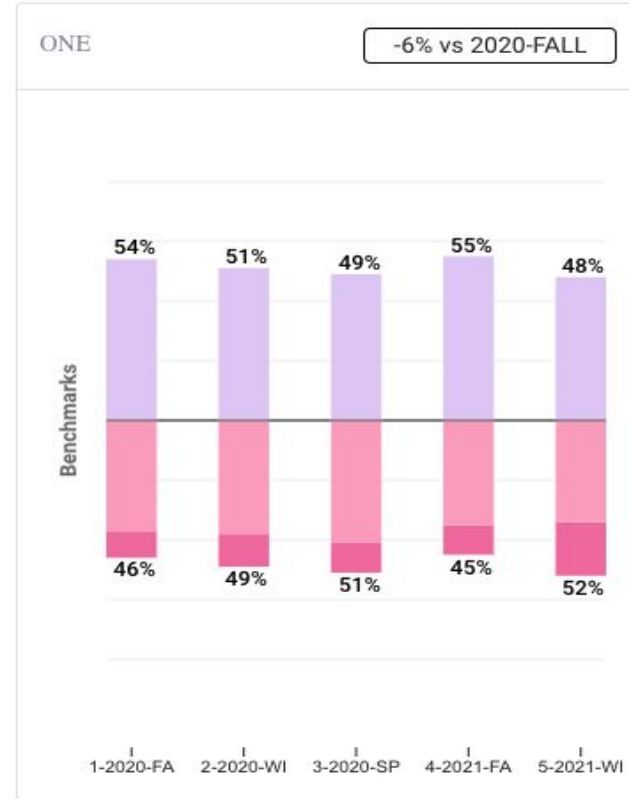
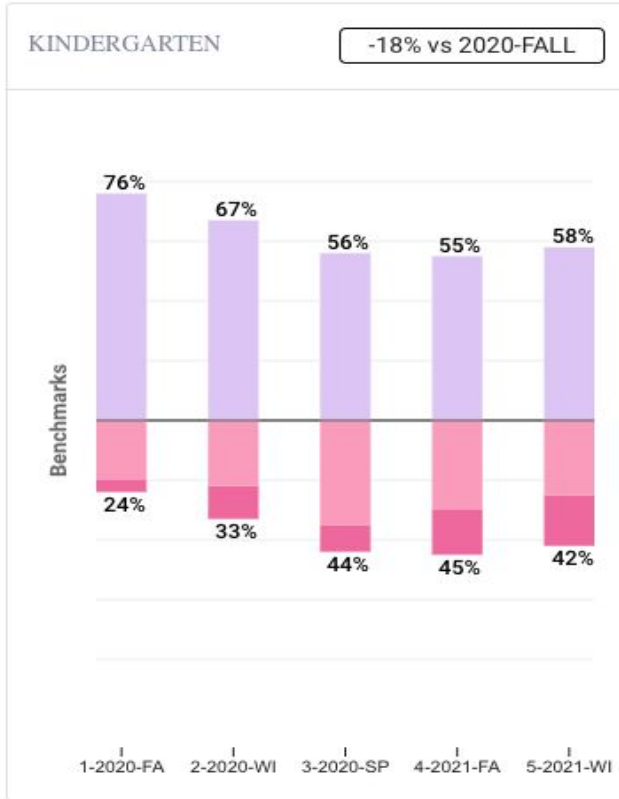


District Early Reading Longitudinal Data (grades K-1)

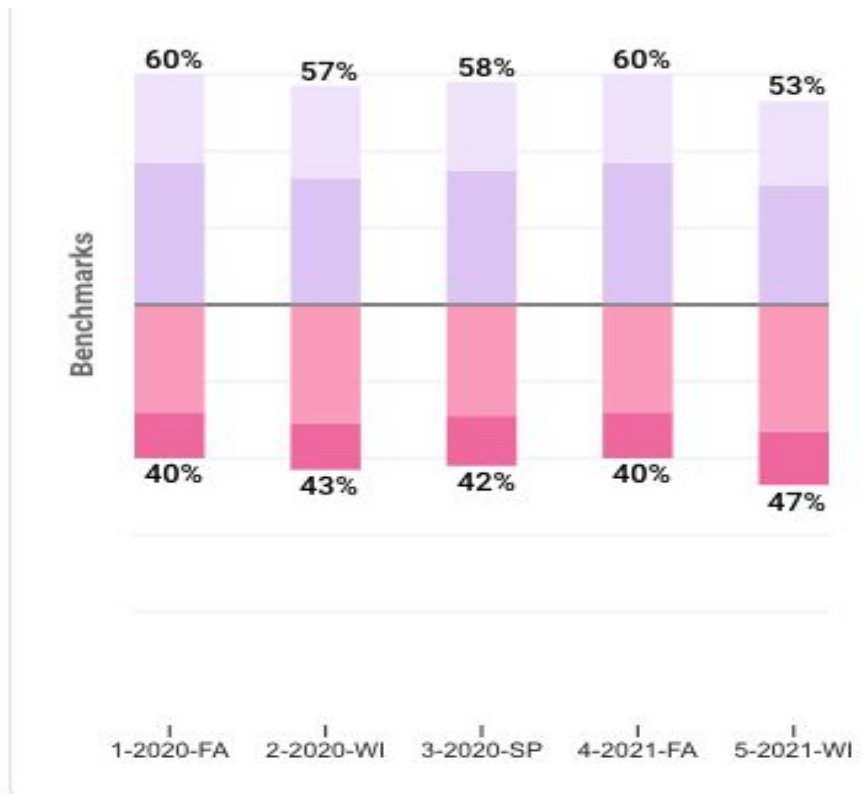


The Early Reading composite score is based on several subtests including letter sounds, sight words and nonsense words.

Grade Level Breakdown: K-1



District CBM Reading Longitudinal Data (grades 2-6)



CBM is a
reading fluency
measure

Grade Level Breakdown: 2nd-4th

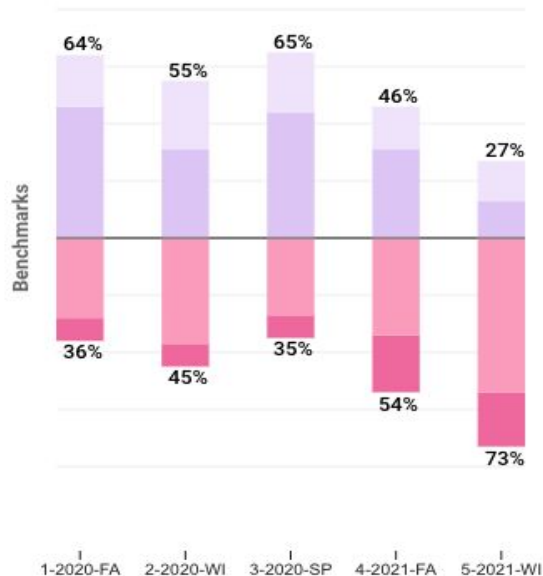
TWO

-1% vs 2020-FALL



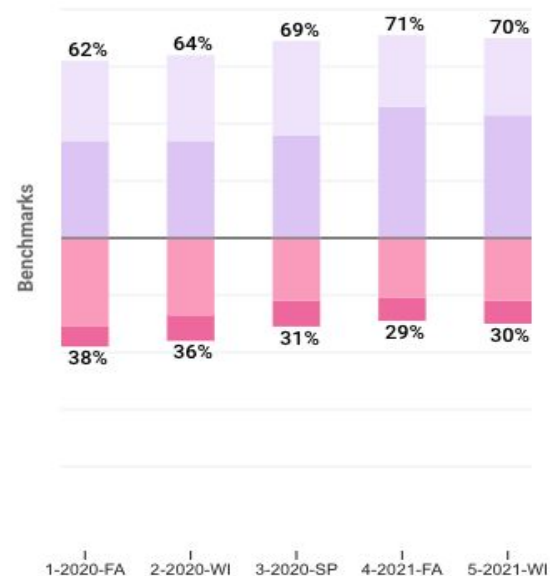
THREE

-37% vs 2020-FALL



FOUR

+8% vs 2020-FALL



Grade Level Breakdown: 5th-6th

