



## Administration Building in Clarinda, Iowa

**Date: 04/16/23**

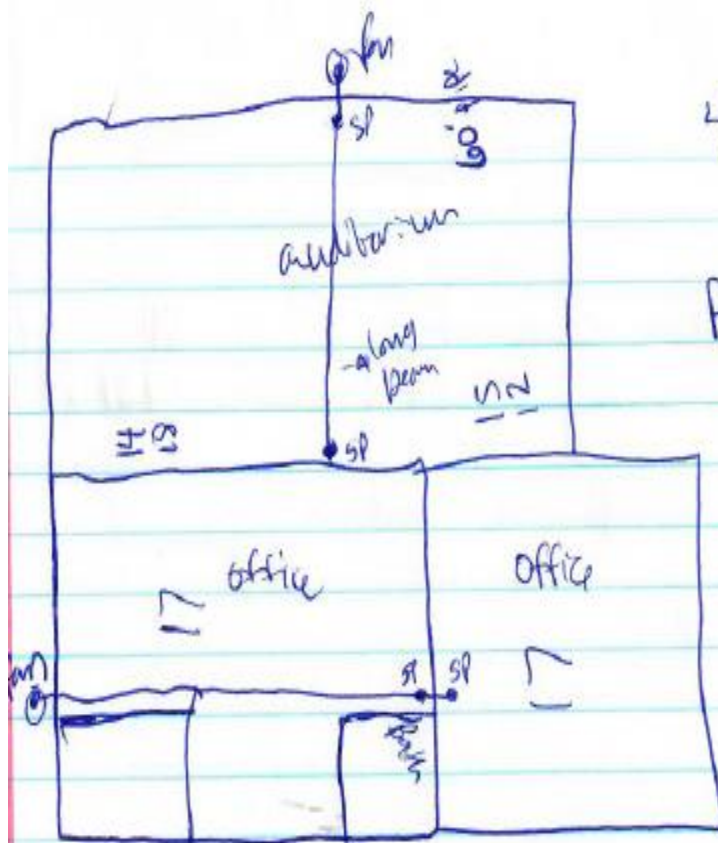
Radon Pros will install 3 mitigation systems using 4" PVC with Legend Extremes. Each System will have two suction points and exit through the side of the building. Depending on the size of wall footings, the suction points may need to be at least 8 inches from exterior wall to avoid being on top of footings. We will install suction points as close to exterior wall without reducing system efficiency. Radon Pros is not responsible for installing electrical. Each system needs to have a shut-off switch located within sight of where the systems exit building.

One system will be in the auditorium with two suction points on each side in the center of the room. All equipment and mats need to be removed from the area prior to installation. The second system will be in the offices located next to the auditorium. This system will run above the ceiling then drop down the wall the two offices share with a suction point on each side. Parts of the ceiling will need to be removed from the outer office to install the system this way. Radon Pros is not responsible for fixing the ceiling. We will remove the minimal amount of ceiling tiles to install the system.

The third system will be on the opposite side of the building and have two suction points. Radon Pros will run most of the pipe along beams or walls to keep pipe out of the way. We recommend covering anything that you don't want to be exposed to some dust.

The total cost of the project will be \$17,274. If Radon Pros conducts post-mitigation testing, we will test the same 6 locations that were tested before installation. The total cost of the project will be an additional \$600.

Randy Chaney  
Radon Pros Mitigation Manager  
Iowa Lic #RNTST10041  
Cell: 402-650-2850  
Office: 402-639-1100



4" pipe

Rent a drill

